

The Lord Is My Salvation

Words and Music by
Keith Getty, Kristyn Getty,
Nathan Nockels and Jonas Myrin

♩ = 69

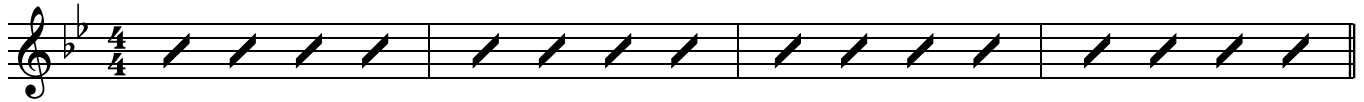
INTRO

Gm⁷

E^b2(6)

Gm⁷

E^b2(6)



VERSE 1 & 2

5

Gm

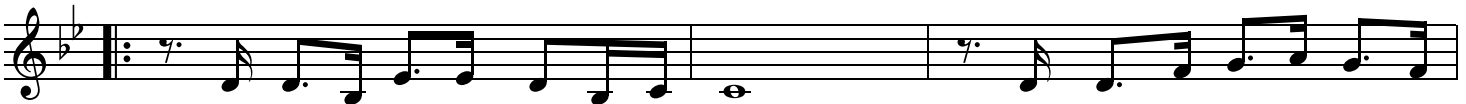
E^b

F^{sus}

F

Gm

E^b



1. The grace of God has reached for — me,
2. I will not fear when dark - ness — falls,

and pulled me from the rag - ing
His strength will help me scale these

8

F^{sus}

F

E^b/G

F/A

B^b

B^b/D

E^b

1.

Cm⁷

F



sea.
walls.

And I am safe on this sol - id ground:
I'll see the dawn of the ris - ing sun:

The Lord is my sal - va -
The

12

E^b/B^b

F/B^b

2.

Cm⁷

F^{sus}

F

E^b/B^b

F/B^b

B^b

§

CHORUS

F



-tion.

Lord is my sal - va - tion.

Who is like the —

16

E^b

B^b/D

F

E^b

B^b/D

Gm

F/A



Lord our God?

Strong to save, faith - ful in love.

My debt is paid and the

CCLI Song # 7063694

© 2016 Capitol CMG Paragon | Son of the Lion | Getty Music Publishing | Sweater Weather Music
For use solely with the SongSelect®. Terms of Use. All rights reserved. www.ccli.com
CCLI License # 494615

2nd time to Coda ⊕

20 $B\flat$ $B\flat/D$ $E\flat$ $B\flat/D$ Cm^7 F^{sus} $E\flat/B\flat$ $F/B\flat$

vic - t'ry won: ___ The Lord is my sal - va - tion.

VERSE 3 & 4

23 Gm^7 $E\flat$ F^{sus} F Gm^7 $E\flat$

3. My hope is hid - den in the _ Lord, He flow'rs each prom - ise of His
4. In times of wait - ing, times of _ need, when I know loss, when I am

26 F^{sus} F $E\flat/G$ F/A $B\flat$ $B\flat maj^7/D$ $E\flat$

Word. When win - ter fades, I know spring will come: The
weak. I know His grace will re - new these days: The

29 1. Cm^7 F^{sus} F $E\flat/B\flat$ $F/B\flat$ $B\flat$ 2. Cm^7 F $E\flat/B\flat$ $F/B\flat$ $B\flat$ D.S. al Coda

1. Cm^7 F^{sus} F $E\flat/B\flat$ $F/B\flat$ $B\flat$ 2. Cm^7 F $E\flat/B\flat$ $F/B\flat$ $B\flat$ D.S. al Coda

Lord is my sal - va - tion. Lord is my sal - va - tion.

⊕ Coda

VERSE 5

33 $E\flat/B\flat$ $F/B\flat$ Gm $E\flat$ F^{sus} F

- tion. 5. And when I reach the fi - nal _ day,

36 Gm^7 $E\flat$ F^{sus} F $E\flat/G$ F/A

He will not leave me in the grave. But I will rise, He will

CHORUS

39 B \flat B \flat maj 7 /D E \flat Cm 7 F^{sus} F E \flat /B \flat F/B \flat B \flat F

call me home: The Lord is my sal - va - tion. Who is like the _

43 E \flat B \flat /D F E \flat B \flat /D Gm F/A

Lord our God? Strong to save, faith - ful in love. My debt is paid and the

BRIDGE

47 B \flat B \flat /D E \flat B \flat /D Cm 7 F^{sus} B \flat ^{sus} B \flat E \flat B \flat /D

vic - try won; _ The Lord is my sal - va - tion. Glo - ry be to God, _ the Fa -

51 F/A Gm E \flat B \flat /D F E \flat B \flat /D

ther, _ glo - ry be to God, _ the Son, _ glo - ry be to God, _ the Spir -

55 Dm Gm Cm 7 F^{sus} 1. B \flat ^{sus} B \flat 2. Gm F E \flat B \flat /D

- it; _ The Lord is our sal - va - tion. _ Glo - ry tion, the

ENDING

59 Cm 7 F Gm F E \flat B \flat /D Cm 7

Lord is our sal - va - tion, the Lord is our sal -

62

OUTRO

F Gm⁷ E_b²⁽⁶⁾ Gm⁷ E_b²⁽⁶⁾

-va - tion. _____